



**WARDS
SEA KING**

**OUTBOARD
MOTOR**

PARTS CATALOG

1967-1969

MW-9

80

O.B.C. CERTIFIED BRAKE H.P. AT 4,750 R.P.M.

**MODEL
VWB-27980-1**

Printed in U.S.A.

10/66

SEA KING—SOLD EXCLUSIVELY BY MONTGOMERY WARD

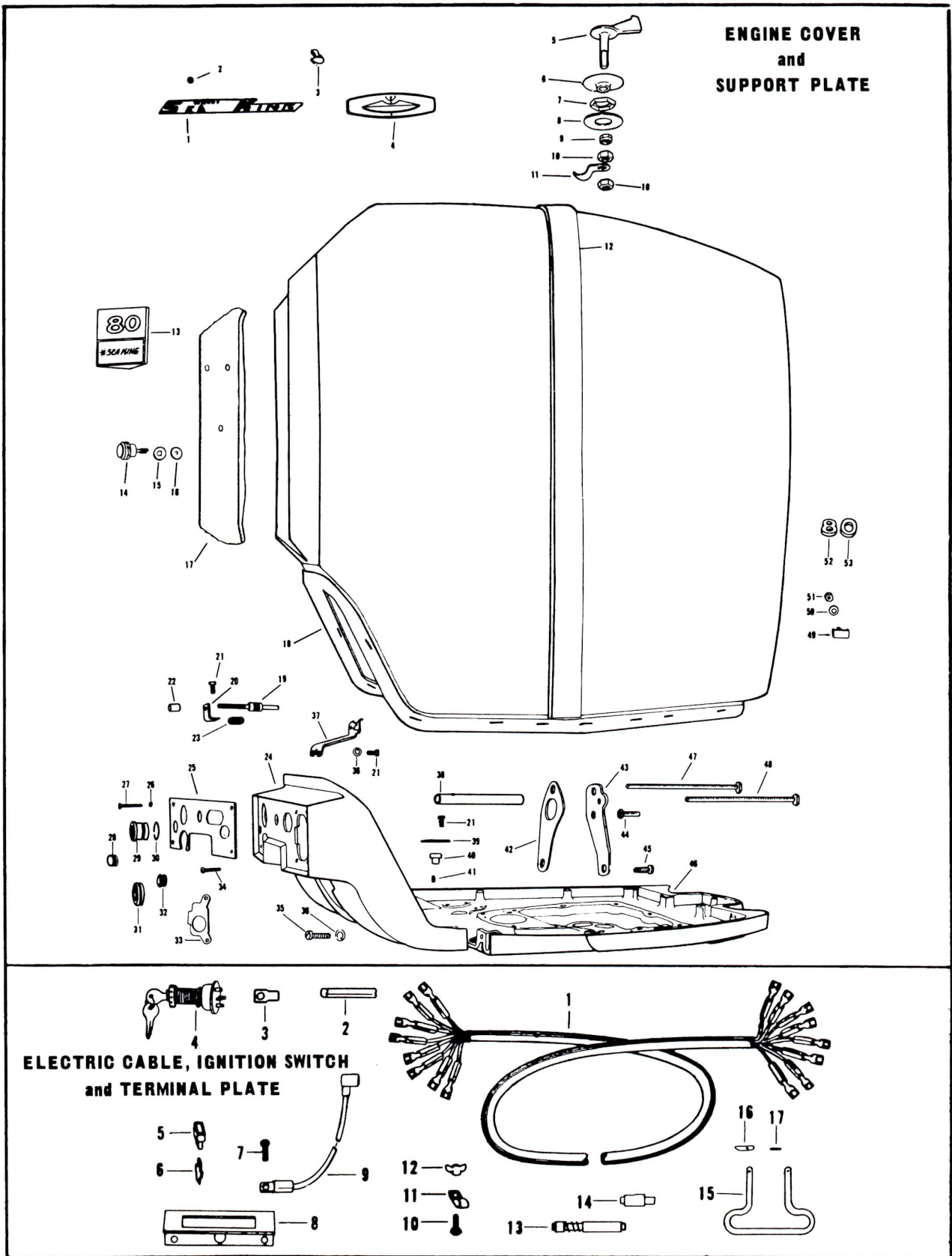
Engine Cover and Support Plate

ILLUS NO.	PART NO.	QTY.	DESCRIPTION	ILLUS. NO.	PART NO.	QTY.	DESCRIPTION
1	309366	2	Name plate - "Sea King"	28	94840	1	Grommet, fuel line
2	85735	18	Seal, medallions	29	84189	1	Bushing throttle cable entry
3	1753	18	Fastener	30	84208-1	1	Retaining ring
4	201386-1	2	Medallion - Trident	31	98899	1	Grommet, shift cable
5	84469-1	1	Cover latch handle	32	53504	1	Grommet, control panel
6	84099	1	Bushing, cover latch	33	177703	1	Adapter, control panel
7	1033	1	Pal nut, 7/8-14	34	1479	2	Cross recess truss hd screw, 8-32 x 5/16
8	8084	1	Plain washer	35	1111	3	Fill hd screw, 1/4-20 x 7/8
9	1354	1	Hex jam nut, 1/2-20	36	8063	5	Lockwasher
10	7016	2	Elastic stop nut	37	A84612	1	Gear shift conduit bracket w/clip
11	84777	1	Latch, engine cover	38	184186	2	Spacer, control panel
12	84512	1	Trim strip, engine cover	39	84439	1	Bracket, tower shaft bearing
13	204711-2	1	Engine cover plate	40	A98689	1	Bearing, tower shaft lower w/set screw
14	A204507	1	Knob, carburetor access door w/stud	41	1277	1	Slot set screw, oval point, 1/4-28 x 3/8
15	19140	1	Washer	42	184952	1	Bracket, support plate starboard
16	84642	1	Retainer	43	184951	1	Bracket, support plate port
17	A204708	1	Carburetor access door w/gasket and knob	44	1246	2	Hex slot hd screw, 5/16-18 x 1-1/4
18	A204944	1	Engine cover w/trim and packaging	45	1240	2	Hex slot hd screw, 1/4-20 x 7/8
19	84690	1	Throttle stop screw	46	84038-1	1	Support plate
20	84182	1	Throttle stop bracket	47	184166	1	Screw, control panel starboard
21	1236	5	Hex slot hd screw, 1/4-20 x 1/2	48	184165	1	Screw, control panel port
22	84198	1	Throttle stop	49	84480-1	8	Trim retainer
23	98199	2	Spring, throttle stop	50	8072	8	Plain washer
24	177181	1	Engine control panel	51	7015	8	Hex nut, 10-32
25	204888	1	Control panel plate	52	204528-1	1	Medallion, number "8"
26	1364	3	Square nut, 8-32	53	204530-1	1	Medallion, number "0"
27	1043	2	Cross recess truss hd screw, S. S., 8-32 x 1-1/8		204385-1	1	Decal-"Alte nator Electric" (not shown)

Electric Cable, Ignition Switch and Terminal Plate

ILLUS. NO.	PART NO.	QTY.	DESCRIPTION	ILLUS. NO.	PART NO.	QTY.	DESCRIPTION
1	89843	1	Electric control cable 20 ft.	8	177497	1	Terminal plate
2	901914	3	Sleeve	9	89907	1	Lead wire, terminal plate ground
3	98898	1	Slide terminal	10	1220	1	Hex slot hd screw 1/4-20 x 7/16
4	296918	1	Ignition switch w/keys	11	84446	2	Clamp, electric cable
5	9058	1	Terminal bushing "Red"	12	7010	1	Wing nut
	9059	1	Terminal bushing "Green"	13	A58976-1	1	Connector, throttle cable
	9060	1	Terminal bushing "Blue"	14	58685-2	1	Connector, shift cable
	9061	1	Terminal bushing "Purple"	15	111698	1	Remote steering bracket
	9062	1	Terminal bushing "White"	16	111694-1	2	Steering bracket latch
	9063	1	Terminal bushing "Yellow"	17	8535	2	Spring pin
	9064	1	Terminal bushing "Black"		58374-1	1	Decal switch (not shown)
	9065	1	Terminal bushing "Orange"				
6	89898	8	Spade terminal, dual male				
7	1199	2	Hex hd screw, 1/4-20 x 1				

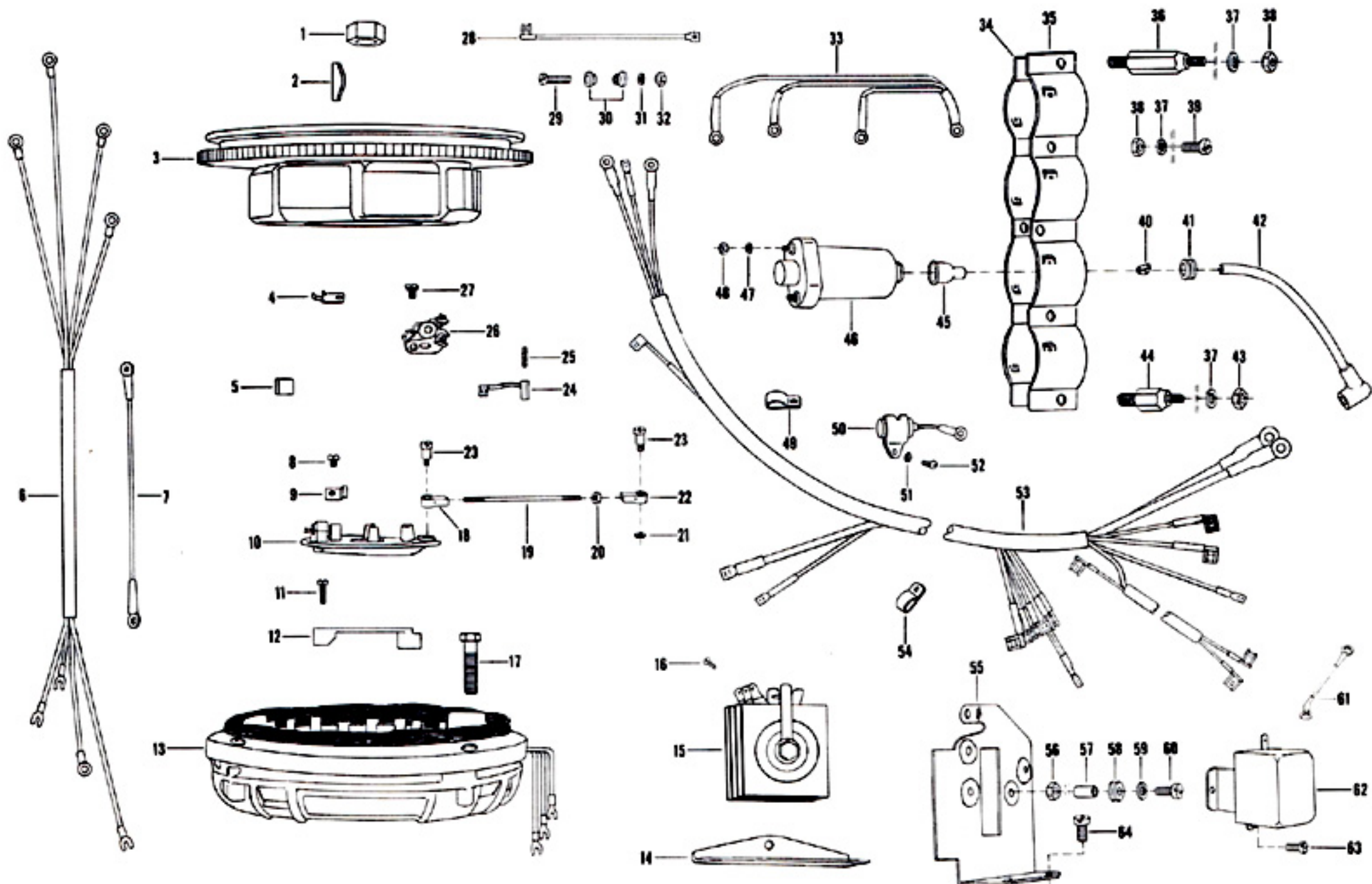
Order by Part Number and Name, giving Motor, Model and Serial Number



Alternator and Ignition System

ILLUS. NO.	PART NO.	QTY.	DESCRIPTION
1	1345	1	Hex nut, 3/4-16
2	84498	1	Flywheel key
3	12212	1	Alternator rotor (84097-3)
4	12198	2	Lead group clamp
5	12227	4	Cam wiper felt
6	12199	1	Primary lead group harness, w/12192-Red, 12195-Orange, 12200 Yellow, 12201-Green, breaker leads, and one 12205 sleeve
7	84664	1	Lead wire, breaker ground
8	1494	4	Fill hd screw w/lockwasher, 10-32x3/8
9	84479-1	4	Breaker plate shoe
10	12204	1	Breaker plate w/brush holder
11	1092	2	Fill hd screw, 10-32x5/8
12	84482-2	1	Breaker lead guard
13	12214	1	Stator group (84095-2)
14	84454	1	Rectifier mounting bracket
15	92450-4	1	Rectifier
16	1645	5	Rd hd screw, 6-32x1/4
17	1503	4	Hex bolt 3/8-16x1-5/8
18	84036	1	Spark control bearing, left hand
19	84445	1	Spark control link
20	1339	1	Hex nut, 10-24
21	8013	1	Plain washer
22	84035-2	1	Spark control bearing, right hand
23	84026	2	Spark control swivel
24	12206	1	Brush unit w/spring
25		1	Spring, order 12206 brush unit
26	12194	4	Contact set
27	12209	4	Clamp screw
28	12217	1	Lead wire, field
29		1	Screw
30		2	Insulation Order
31		1	Lockwasher 12224
32		1	Hex nut
33	84042	1	Lead wire, primary jumper
34	84501	1	Clamp, ignition coil, inner
35	84513	1	Clamp, ignition coil, outer
36	84440	1	Stud, ignition coil clamp
37	8064	6	Lockwasher
38	1516	3	Hex nut, 5/16-18
39	1130	2	Fill hd screw, 5/16-18x5/8
40	203673	4	Terminal clip
41	84991	4	Grommet, lead wire
42	84975-1	4	Spark plug lead wire
43	1359	2	Hex jam nut, 1/2Acr. flats, 5/16-18
44	84273	2	Stud, ignition coil clamp
45	203276	4	Secondary boot
46	A91475-1	4	Ignition coil w/boot, clip and hex nut
47	8091	8	Lockwasher
48	1513	8	Hex nut, 10-32
49	84446	1	Clamp
50	12196	4	Condenser (84030)
51	8056	4	Spring lockwasher
52	1302	4	Rd hd screw, 8-32x1/4
53	84744-3	1	Engine wiring harness
54	92446	1	Clamp
55	84358-2	1	Electric components bracket
56	7002	2	Elastic stop nut
57	177362	2	Spacer
58	84840	2	Grommet
59	8085	2	Plain washer
60	1111	2	Fill hd screw, 1/4-20x7/8
61	84905	1	Lead wire ground
62	A177470	1	Regulator
63	1311	2	Rd hd screw, 10-32x1/4
64	1236	2	Hex slot hd screw, 1/4 - 20 x 1/2
	12191	1	Breaker plate w/points, cam wiper felt and lead wire (84029-1)
	12224	1	Field terminal unit, includes items 29, 30, 31, and 32
	K-750	4	Sparkie kit

ALTERNATOR AND IGNITION SYSTEM



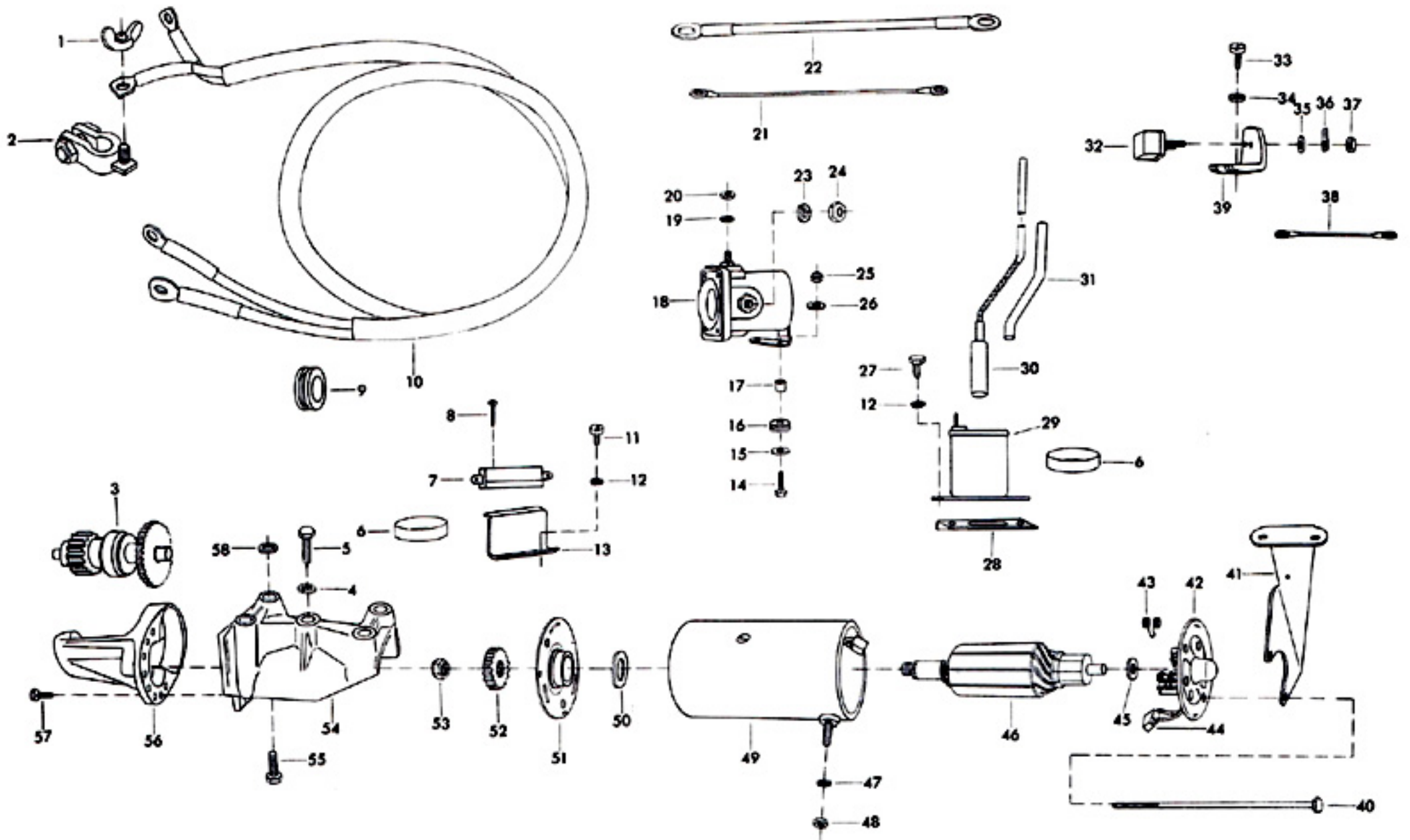
Electric Starter and Control Components

ILLUS. NO.	PART NO.	QTY.	DESCRIPTION
1	381797	2	Battery terminal wing nut
2	381898	2	Battery terminal
3	84674-1	1	Starter drive
4	8065	3	Lockwasher
5	1005	3	Hex bolt, 3/8-16x1-1/2
6	391983	3	Retaining band
7	177449-1	1	Switch, neutral interlock
8	1060	2	Fill hd screw, 6-32x3/4
9	381899	2	Grommet, battery cable entry
10	A381896-4	1	Battery cable
11	1573	2	Fill hd screw, 1/4-20x1/2
12	8060	4	Ext tooth lockwasher
13	84551	1	Bracket, neutral interlock switch
14	1201	2	Hex slot hd screw 3/8 Acr. flats, 1/4-20x3/4
15	8085	1	Plain washer
16	84840	2	Grommet
17	24362	2	Spacer
18	177917	1	Starter relay
19	8091	1	Lockwasher
20	1513	1	Hex nut, 10-32
21	84683	1	Circuit breaker lead
22	84908	1	Starter lead
23	8064	2	Lockwasher
24	1615	2	Hex nut, 5/16-24
25	7002	2	Elastic stop nut
26	8086	1	Plain washer
27	1201	2	Hex slot hd screw, 3/8 Acr. flats, 1/4-20x3/4
28	84595	1	Spacer, choke solenoid
29	289924	1	Choke solenoid
30	A184926	1	Choke solenoid plunger w/sleeve
31	384914	1	Sleeve
32	91460-2	1	Circuit breaker
33	1093	2	Fill hd screw, 10-32x7/16
34	8018	2	Plain washer
35	8018	4	Plain washer
36	98898	3	Slide terminal
37	1513	4	Hex nut, 10-32
38	84905	1	Lead wire
39	91446-1	1	Circuit breaker bracket
40	15018	2	Thru bolt
41	84675	1	Starter mounting bracket lower
42	15023	1	Head assy. commutator end
43	15002	2	Brush spring
44	15009	1	Brush set
45	15005	*	Thrust washer 1/32"
46	15033	1	Armature
47	8063	1	Lockwasher
48	1343	1	Hex nut
49	15030	1	Field and frame assy.
50	15003	1	Thrust washer, 1/32"
	15006	1	Thrust washer, .042"
51	15025	1	Head assy. drive end
52	15016	1	Gear
53	7001	1	Hex nut
54	A84427-1	1	Starter mounting bracket w/bearing
55	1008	2	Hex bolt, 3/8-16x1-1/8
56	A84644-2	1	Starter pinion cage w/bushing
57	1201	3	Hex slot hd screw, 3/8 Acr. flats 1/4-20x3/4
58	1712	5	Plain washer

* Use as many thrust washers as are required

ORDER ELECTRIC STARTER MOTOR REPAIR PARTS DIRECTLY FROM YOUR LOCAL PRESTOLITE DEALER OR DISTRIBUTOR.

ELECTRIC STARTER AND CONTROL COMPONENTS



Carburetor

ILLUS. NO.	PART NO.	QTY.	DESCRIPTION	ILLUS. NO.	PART NO.	QTY.	DESCRIPTION
1	RK-469	1	Repair parts kit	38	013683	1	Main fuel jet gasket
2	1059	1	Fill hd screw, S.S., 6-32 x 1/4	39	* 012302	1	Main fuel jet (.082 Standard)
3	* GS-141	1	Gasket and packing set	40	01102	1	Fuel bowl plug screw
4	012309	1	Choke shaft and lever	41	1014	1	Cotter pin, S.S., 1/16 3/8
5	* 012303	1	Idle adjustment screw	42	8088	2	Plain washer
6	* 011103	1	Idle adjustment screw spring	43	184579	2	Seal, choke arm swivel
7	06393	2	Retaining screw	44	184033-1	1	Choke arm swivel
8	010276	1	Body gasket	45	84093	1	Carburetor guard-star-board
9	* 012254	1	Main nozzle	46	1565	4	Hex slot hd screw 10-32 x 9/16
10	* 012259	1	Inlet needle, seat and gasket	47	8072	4	Plain washer
11	06396	2	Retaining screw lockwasher	48	84092	1	Carburetor guard-port
12	03804	1	Throttle shaft position retaining washer	49	90807	2	Retainer
13	012250	1	Choke shutter	50	384193	1	Throttle tie bar, lower
14	* 08942	4	Screw and lockwasher	51	384316	1	Throttle roller shaft
15	010883	1	Choke relief valve spring	52	92759	1	Throttle cam follower roller
16	06569	1	Idle tube gasket	53	384126	1	Throttle tie bar coupler
17	* 011177	1	Idle tube	54	384288	1	Throttle roller adjusting nut
18	012251	1	Choke relief valve	55	384511	1	Throttle tie bar, upper
19	02395	1	Body channel plug screw	56	A84815-1	1	Throttle gear w/screw
20	* 04326	1	Body channel welch plug	57	1050	1	Fill hd screw, 10-24 x 1
21	* 08647	1	Choke shaft return spring	58	1306	4	Rd hd screw, 10-24 x 3/8
22	012504	1	Choke lever	59	84665	2	Tower shaft bearing cap
23	012312	1	Throttle shaft and lever	60	A84192-1	1	Throttle cam w/shaft
24	* 08647	1	Throttle shaft return spring	61	8018	1	Plain washer
25	012252	1	Throttle shutter	62	1018	1	Cotter pin, 1/16 x 1/2
26	40314-1	2	Elbow, carburetor inlet	63	98199	1	Throttle gear spring
27	40906-1	2	Carburetor gasket	64	84419	1	Throttle trunnion bracket
28	010165	1	Inlet seat gasket	65	7002	1	Elastic stop nut
29	010318	1	Float	66	84195	1	Throttle trunnion swivel
30	* 010961	1	Float lever pin	67	93807	2	Retainer
31	010277	1	Main nozzle boss gasket	68	8002	2	Plain washer
32	2A84838-1	1	Tower shaft (as shown)	69	84403	1	Carburetor choke link
33	03943	1	Channel plug screw	70	1340	1	Hex nut, 10-32
34	1198	1	Hex slot hd screw, 1/4 - 20 x 1		184061	2	Carburetor complete OM 17A (not shown)
35	8028	1	Plain washer				
36	010278	4	Body retaining screw				
37	012314	1	Fuel Bowl				

OPTIONAL SIZE MAIN FUEL JETS (Use Only at Altitude Indicated)

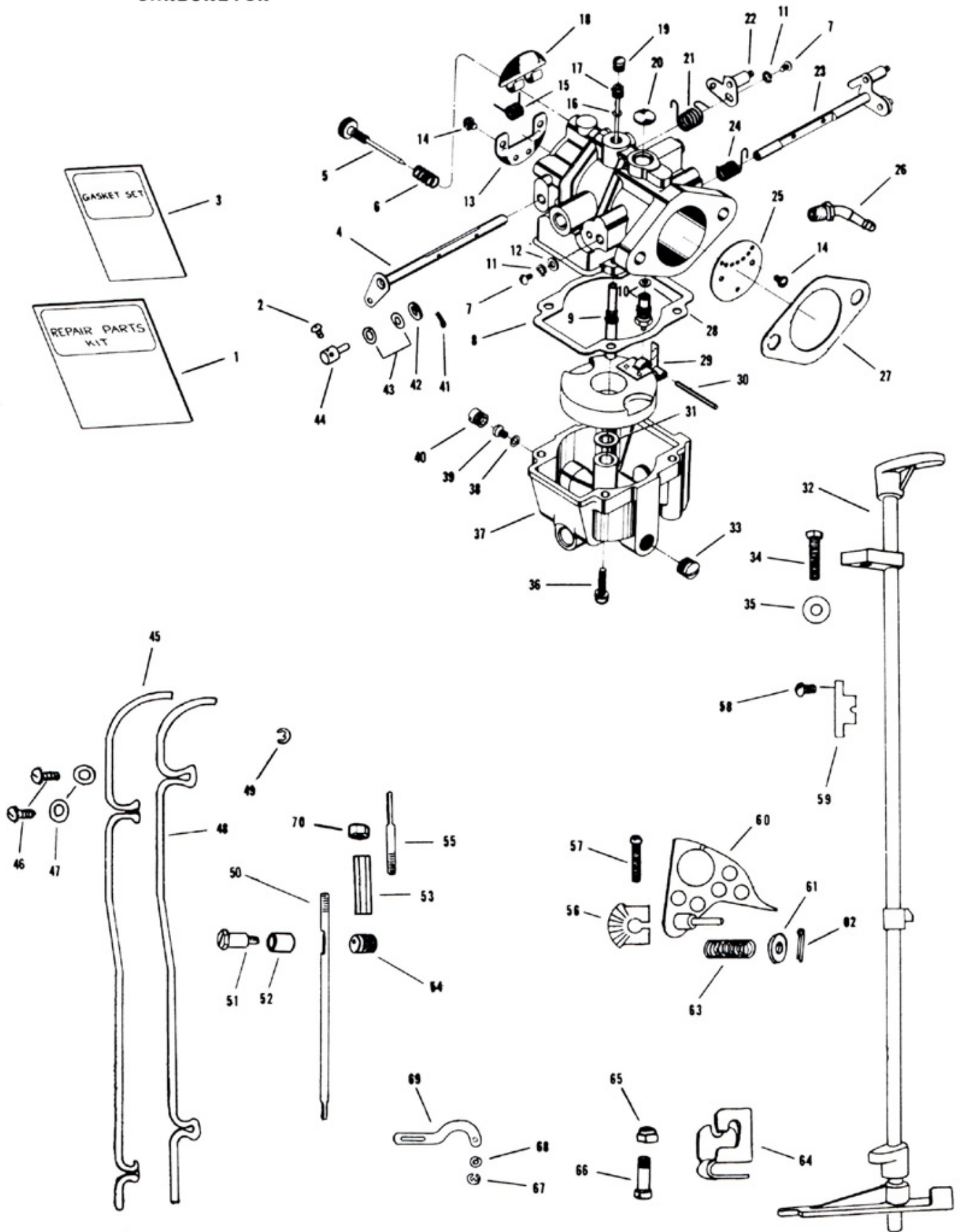
	Sea Level - 3000 Ft.	3000 - 4500 Ft.	4500 - 5500 Ft.	5500-7000 Ft.	7000 Ft. -
Jet Size	.082 (Std.)	.076	.073	.071	.069
Part Number	012302	012663	012447	012645	012515

Jet Size .0785
Part Number 012313

IMPORTANT: The .0785" main fuel jet is only to be used as a replacement for the standard .082" main fuel jet in areas where the standard jet proves too rich for normal operation. The .0785 high speed jet **MUST NOT** be used until a minimum of ten (10) hours running time are completed. If the .0785 jets are installed before ten (10) hours of running time has been accumulated, damage to the engine because of piston scoring can occur.

* Indicates Contents of Repair Parts Kit.

CARBURETOR

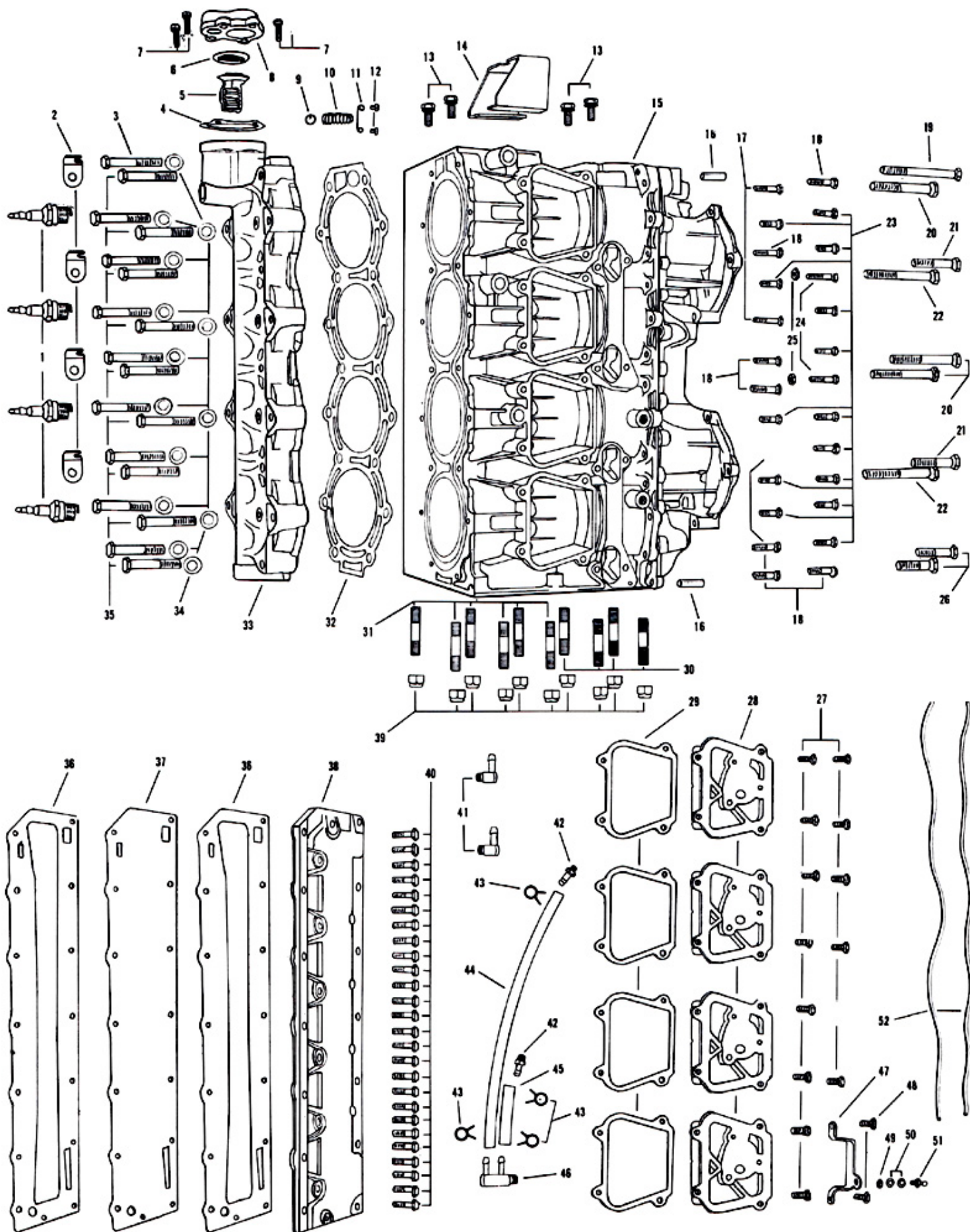


Cylinder

ILLUS. NO.	PART NO.	QTY.	DESCRIPTION
1	78227	4	Spark plug (Champion J4J)
2	84834	4	Spark plug lead wire clip
3	1184	1	Hex hd cap screw, 3/8 - 16 x 2 - 1/2
4	84067	1	Thermostat cover gasket
5	84068-2	1	Thermostat
6	84504	1	Thermostat grommet
7	* 1201	4	Hex slot hd screw, 1/4 - 20 x 3/4
8	84066	1	Thermostat cover
9	84916	1	Thermostat valve
10	84268	1	Thermostat spring
11	84930	1	Thermostat spring retainer
12	1059	2	Fill hd screw S.S. 6-32 x 1/4
13	1482	4	Hex slot hd screw w/lockwasher, 5/16 - 18 x 3/4
14	84774	1	Engine cover latch bracket
15	* 2A384010-1	1	Cylinder w/locating pins
16	8563	2	Dowel pin
17	* 1198	2	Hex slot hd screw, 1/4 - 20 x 1
18	1198	8	Hex slot hd screw, 1/4 - 20 x 1
19	* 1010	1	Regular hex bolt, 3/8 - 16 x 3 - 1/8
20	* 1009	3	Regular hex bolt, 3/8 - 16 x 2 - 3/4
21	* 1192	2	Regular hex bolt, 3/8 - 16 x 1 - 3/4
22	* 1003	2	Regular hex bolt, 3/8 - 16 x 3
23	* 1201	14	Hex slot hd screw, 1/4 - 20 x 3/4
24	* 1580	2	Hex slot hd screw, 1/4 - 20 x 1 - 1/8
25	* 1514	2	Hex jam nut 1/4 - 20
26	* 1005	2	Regular hex bolt, 3/8 - 16 x 1 - 1/2
27	1481	14	Hex slot hd screw, 1/4 - 20 x 9/16
28	84222	4	Transfer port cover
29	40223	4	Transfer port cover gasket
30	* 84210	4	Cylinder stud-front
31	* 84211	6	Cylinder stud - rear
32	84529	1	Cylinder head gasket
33	A84518-1	1	Cylinder head w/welch plugs, thermostat spring, spring retainer and valve
34	8039	14	Plain washer
35	1544	17	Hex hd cap screw, 3/8 - 16 x 2-1/4
36	84153-1	2	Exhaust port plate gasket
37	84151	1	Exhaust port plate
38	84152	1	Exhaust port cover
39	7004	10	Elastic stop nut
40	1203	24	Hex hd screw, 1/4 - 20 x 7/8
41	84314	2	Elbow
42	A141801	2	Drain fitting w/metering cup
43	2706772	4	Fuel line clamp
44	A901753	1	Drain line w/clamps
45	A84243	1	Drain line w/clamps
46	84922	1	Fuel line fitting
47	84371	1	Throttle connector stud bracket
48	1201	2	Hex slot hd screw, 1/4 - 20 x 3/4
49	1340	1	Hex nut, 10-32
50	8058	2	Int tooth lockwasher
51	98273	1	Rod end connector stud
52	* 184122-1	1	Crankcase parting line seal
	G80161	1	Gasket kit (not shown)
	C384010	1	Cylinder, complete (not shown)
	K-734	1	Engine touch-up paint (6 oz. spray bomb) frost white flat

* Indicates Contents of Cylinder Complete - Also See Crankshaft Page.

CYLINDER



Crankshaft and Piston Group

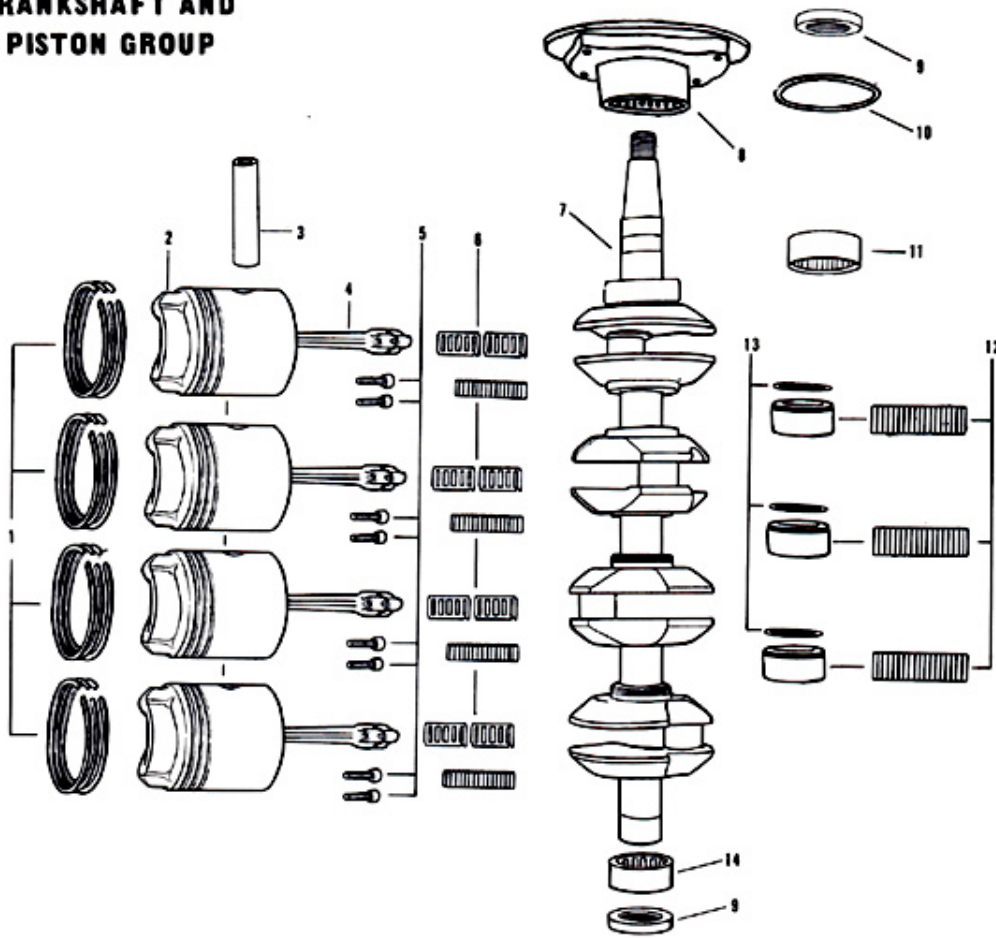
ILLUS. NO.	PART NO.	QTY.	DESCRIPTION	ILLUS. NO.	PART NO.	QTY.	DESCRIPTION
1	* A184260	2	Piston ring set (6 per set)	8	A284144	1	Bearing cage w/bearing and seal
2	* 2A184015-1	4	Piston w/bearings	9	84146	2	Seal
3	* 40017-1	4	Piston pin	10	84278	1	Seal, bearing cage
4	* A84016-5	4	Connecting rod w/cap and screws	11	* 84028	1	Crankshaft upper main bearing
5	85634	8	Connecting rod screw	12	* A84655-2	3	Center main bearing w/snap ring and rollers (18)
6	* A93241	4	Crankpin roller cage w/rollers (16 per set)	13	* 84410	3	Snap ring
7	* 2A384018	1	Crankshaft w/upper main bearing	14	84014	1	Crankshaft lower main bearing

* Indicates contents of cylinder, complete. Also see power head page.

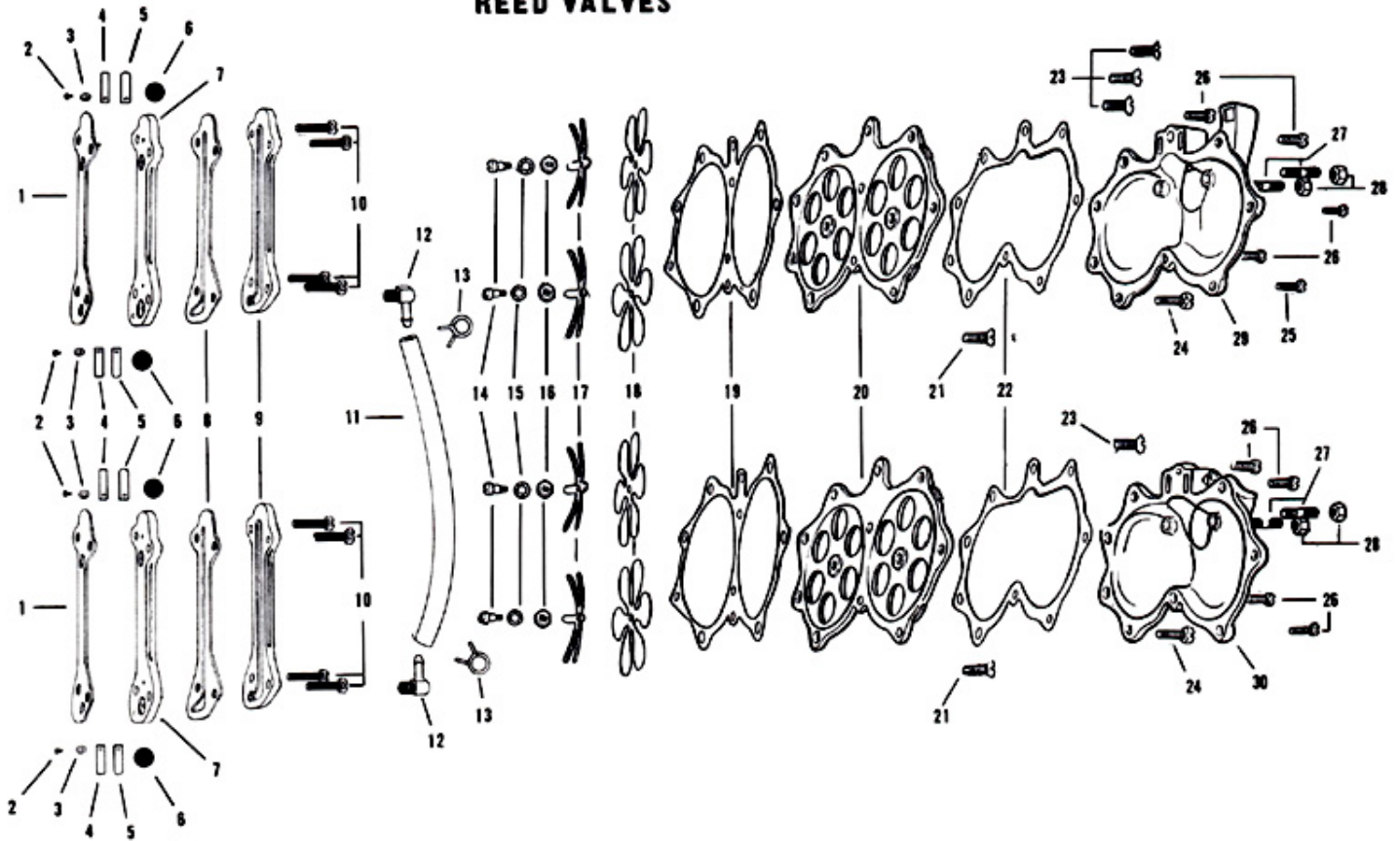
Reed Valves

ILLUS. NO.	PART NO.	QTY.	DESCRIPTION	ILLUS. NO.	PART NO.	QTY.	DESCRIPTION
1	84748-1	2	Gasket, reed plate	19	40159-1	2	Reed plate gasket
2	1286	4	Pan hd screw, 4-40 x 3/16	20	A84158-1	2	Reed plate w/reeds stops, and screws
3	8003	4	Plain washer	21	1157	2	Flat hd screw 1/4 - 20 x 5/8
4	93920	4	Reed stop, cylinder drain	22	40168	2	Gasket, carburetor adapter flange
5	18160-1	4	Reed, cylinder drain	23	1166	4	Flat hd screw, 5/16-18 x 7/8
6	93811	4	Screen, cylinder drain	24	1123	2	Fill hd screw 5/16 - 18 x 1
7	A84757	2	Reed plate, cylinder drain w/reeds, stops, screws, screen	25	1198	1	Hex slot hd screw 1/4 - 20 x 1
8	84472-1	2	Gasket, cylinder drain cover	26	1240	8	Hex slot hd screw, 1/4 - 20 x 7/8
9	84471-1	2	Cover, cylinder drain	27	40209	4	Carburetor stud
10	1198	8	Hex slot hd screw 1/4 - 20 x 1	28	1516	4	Hex nut, 5/16 - 18
11	A 84360	1	Drain line w/clamp	29	A84157	1	Carburetor adapter flange upper w/studs
12	84314	2	Elbow	30	A84167	1	Carburetor adapter flange lower w/studs
13	97772	2	Fuel line clamp				
14	901197-1	4	Reed screw				
15	8058	4	Int tooth lockwasher				
16	1339	4	Hex nut, 10-24				
17	40161-1	4	Reed stop				
18	40160-3	4	Reed				

CRANKSHAFT AND PISTON GROUP



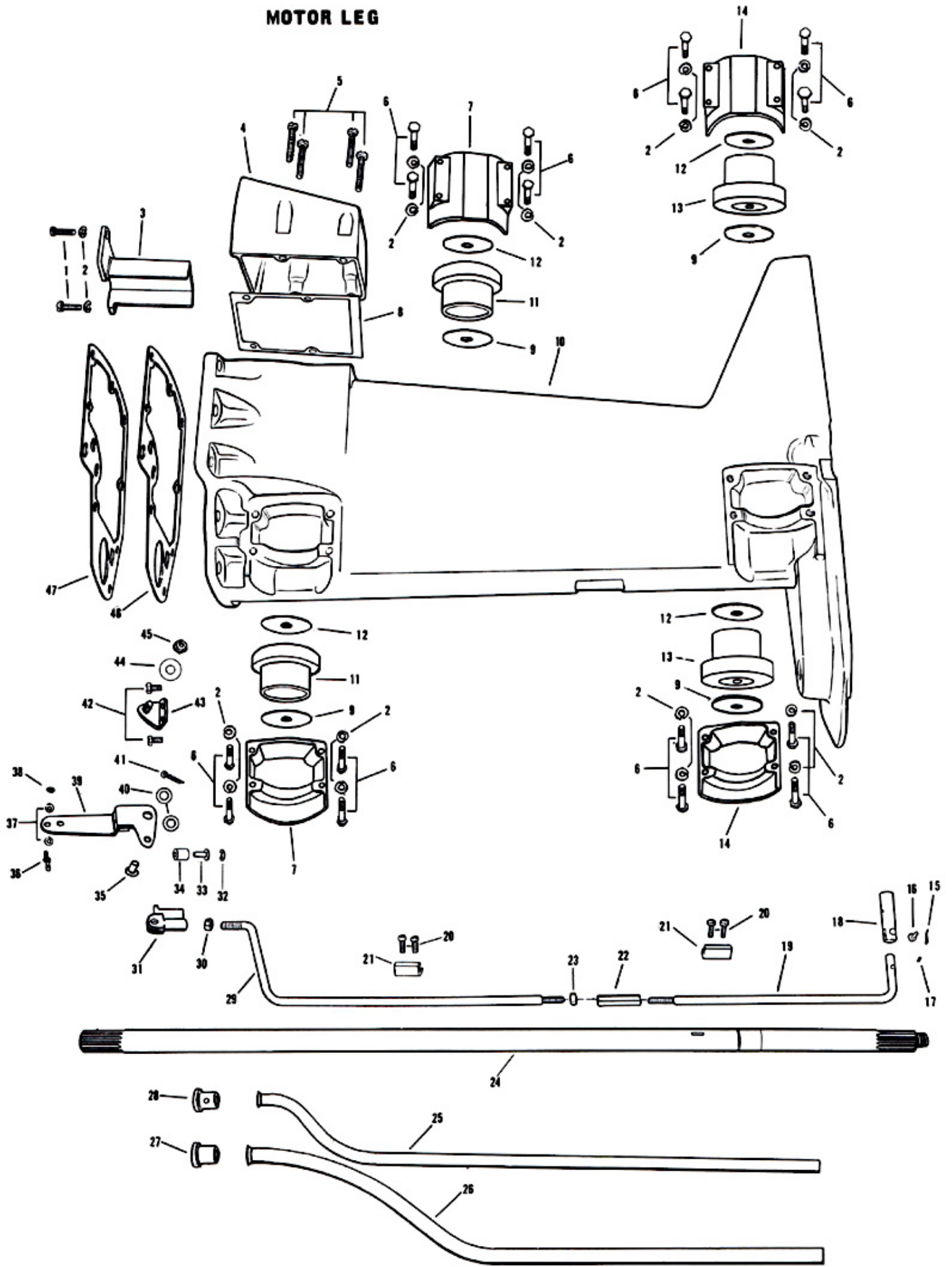
REED VALVES



Motor Leg

ILLUS. NO.	PART NO.	QTY.	DESCRIPTION
1	1577	2	Fill, hd screw, S.S., 1/4 - 20 x 3/4
2	8083	18	Spring lockwasher
3	84779	1	Motor leg baffle
4	84832-1	1	Motor leg exhaust cover
5	1112	4	Fill hd screw, S.S., 1/4 - 20 x 7/8
6	1175	16	Hex hd cap screw, S.S., 1/4 - 20 x 1 - 7/8
7	84972	2	Shock mount cover, upper
8	84833	1	Motor leg exhaust cover gasket
9	84355	4	Shock mount washer
10	177133	1	Motor leg
11	84965	2	Shock mount, upper
12	A84849	4	Shock mount washer w/weld nut
13	84346	2	Shock mount lower
14	84707	2	Shock mount cover, lower
15	1015	1	Cotter pin, S.S., 10 - 24 x 9/16
16	90372-1	1	Gear Shift rod lower pin
17	8537	1	Spring pin
18	84704	1	Gear shift rod lower coupling
19	84616	1	Gear shift rod intermediate
20	1088	4	Fill hd screw, S.S., 10 - 24 x 9/16
21	84196	2	Shift rod shoe
22	901704	1	Gear shift rod coupling
23	1341	1	Hex nut, S.S., 1/4 - 20
24	2A84128-1	1	Drive shaft
25	84261	1	Recirculating water line
26	84244	1	Water inlet line
27	84342	1	Inlet water line seal
28	84914	1	Recirculating water line seal
29	84615	1	Gear shift rod upper
30	1515	1	Hex nut, S.S., 5/16 - 18
31	84976	1	Gear shift interlock plunger
32	90807	1	Retainer
33	46319	1	Bushing, gear shift interlock
34	46318	1	Roller, gear shift interlock
35	84645	1	Gear shift arm swivel
36	98273	1	Rod end connector stud
37	8058	2	Int tooth lockwasher
38	1340	1	Hex nut, 10 - 32
39	A84876	1	Gear shift arm w/roller and pin
40	8035	2	Plain washer
41	1020	1	Cotter pin, S.S., 3/32 x 5/8
42	1220	2	Hex slot hd screw, 1/4 - 20 x 7/16
43	A84872	1	Gear shift arm bracket w/swivel
44	8075	1	Plain washer
45	7014	1	Elastic stop nut
46	84453	1	Cylinder exhaust gasket, lower
47	84279-1	1	Cylinder exhaust gasket, upper

MOTOR LEG



Stern Bracket and Shock Absorber Group

ILLUS. NO.	PART NO.	QTY.	DESCRIPTION
1	53075-1	2	Clamp screw handle
2	1638	2	Spring pin
3	84073	2	Clamp screw
4	8537	2	Spring pin
5	66480	2	Stud
6	84074	2	Clamp screw foot
7	A177032	1	Stern bracket starboard w/item 27
8	1593	2	Hex hd screw, S.S., 3/8 - 16 x 3 or
	1243	2	Hex hd screw, S.S., 3/8 - 16 x 4 - 11/16 (alternate size)
9	8075	2	Plain washer
10	1346	2	Hex nut, S.S., 3/8 - 16
11	177114-1	1	Lock bar handle
12	8547	1	Spring pin
13	A177113	1	Stern bracket lock bar w/end

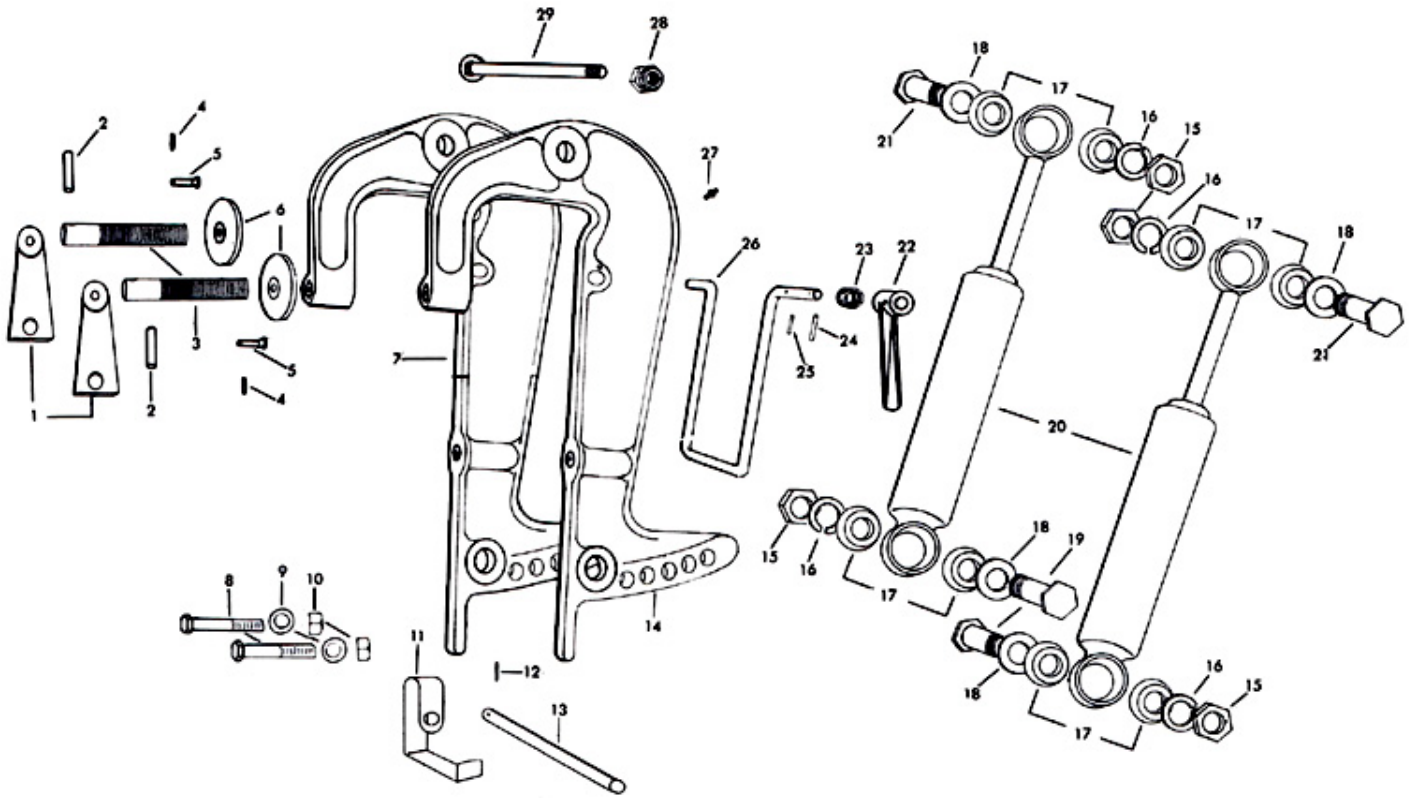
ILLUS. NO.	PART NO.	QTY.	DESCRIPTION
14	A177532	1	Stern bracket port w/ items 27
15	1348	4	Hex nut, 5/16 - 18
16	8089	4	Lockwasher
17	84344	8	Bushing, shock absorber
18	84847	4	Washer, shock absorber
19	84632	2	Bolt, shock absorber, lower
20	84962-1	2	Shock absorber
21	84889	2	Bolt, shock absorber, upper
22	84269	1	Handle, tilt lock
23	84544	1	Spring, tilt lock
24	8567	1	Spring pin, S.S.
25	8540	1	Spring pin, S.S.
26	84541	1	Tilt lock
27	55274	2	Grease fitting
28	7012	1	Elastic stop nut
29	84037	1	Pivot Bolt

Swivel Bracket Group

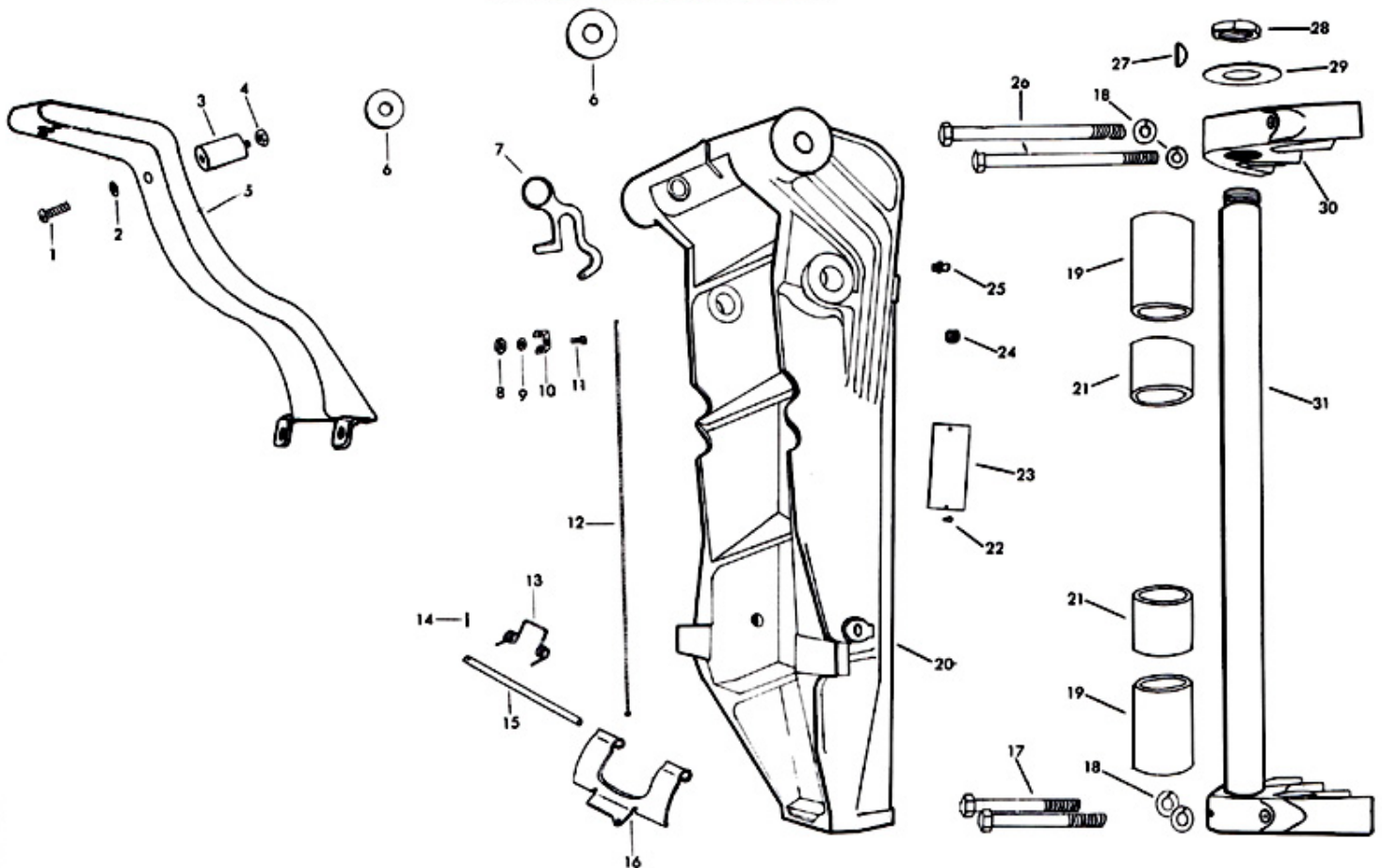
ILLUS. NO.	PART NO.	QTY.	DESCRIPTION
1	1220	1	Hex slot hd screw 1/4 - 20 x 7/16
2	8063	1	Plain washer
3	184347	1	Shock mount
4	1516	1	Hex nut, 5/16 - 18
5	A84582-2	1	Steering arm
6	84286	2	Friction washer
7	177827	1	Reverse lock release lever
8	1473	1	Hex nut, S.S., 10-24
9	8011	1	Plain washer
10	154448	1	Cable clip
11	1088	1	Fill hd screw, S.S., 10-24 x 9/16
12	A136724	1	Reverse lock release cable
13	177300	2	Spring, reverse lock
14	8547	1	Spring pin, S.S.
15	177350	1	Reverse lock pin
16	154349-1	1	Reverse lock
17	1193	2	Hex hd screw, S.S., 3/8 - 16 x 3 - 5/8

ILLUS. NO.	PART NO.	QTY.	DESCRIPTION
18	8065	4	Lockwasher
19	40169	2	Bearing swivel bracket
20	A177072	1	Swivel bracket w/bearings and grease fittings
21	84428	2	Bearing extension
22	1293	2	Rd hd drive screw, type "U" 2 x 3/16
23	A197395-1	1	Identification plate w/screws
24	1267	1	Socket hd set screw oval point, 5/16 - 18 x 1/4
25	55274	1	Grease fitting
26	1243	2	Hex hd screw, 3/8 - 16 x 4 - 11/16
27	9039	1	Woodruff key #7, S.S.
28	84280	1	Nut, king pin
29	84011	1	Washer, swivel bracket
30	84608	1	King pin yoke-upper
31	A177019-2	1	King pin w/yoke lower and plug

STERN BRACKET AND SHOCK ABSORBER GROUP



SWIVEL BRACKET GROUP



Gear Housing

ILLUS. NO.	PART NO.	QTY.	DESCRIPTION
1	93914	1	Seal, recirculating water line lower
2	84735	1	Seal, inlet water line, lower
3	1584	4	Flat hd screw, S.S. 1/4 - 20 x 1 - 3/8
4	84060	1	Water pump body
5	84537-1	1	Water pump top plate
6	84065	1	Water pump impeller
7	84562	1	Water pump back plate
8	1346	3	Hex nut, S.S., 3/8 - 16
9	84031	1	Gasket water pump
10	8065	7	Lockwasher
11	9038	1	Drive key, water pump
12	1557	4	Flat hd screw, S.S. 10 - 24 x 3/8
13	84215	1	Spacer, gear housing stud
14	19342	1	Seal
15	* 84006-2	1	Stud, gear housing, front
16	* 84008-2	1	Stud, gear housing rear
17	* 8001	1	Washer
18	90891	1	Pin, gear shift arm
19	8077	2	Washer
20	50109	2	Plug, gear housing
21	* A84054-1	1	Gear housing lower, w/plug and washer
22	84903	2	Bearing cup
23	* A84871	1	Pin, gear shift w/yoke
24	* 90727	1	Clutch detent ball
25	* 90719	1	Spring, clutch detent
26	* 1713	1	Spring pin, S.S.
27	* 2A384098	1	Propeller shaft w/item 41
28	40342	1	Seal, propeller
29	* A84225	1	Bearing cone w/cup
30	* 84250	1	Bearing cup
31	* A84298-1	1	Propeller shaft bearing cage w/seal
32	* 1252	2	Hex socket hd cap screw, S.S., 3/8 - 16 x 1
33	K-280	1	Shear pin, pack of 3 w/cotter pin
34	A84094	1	Propeller shaft nut w/cotter pin and seal
35	1028	1	Cotter pin, S.S. 1/8 x 2 - 1/4
36	A284265	1	Propeller (12 - 1/8" x 13")
37	84118	1	Seal, propeller shaft

* Indicates contents of Gear Housing, Complete

NOTE: The following spacers are available for the bevel gear thrust - front position.

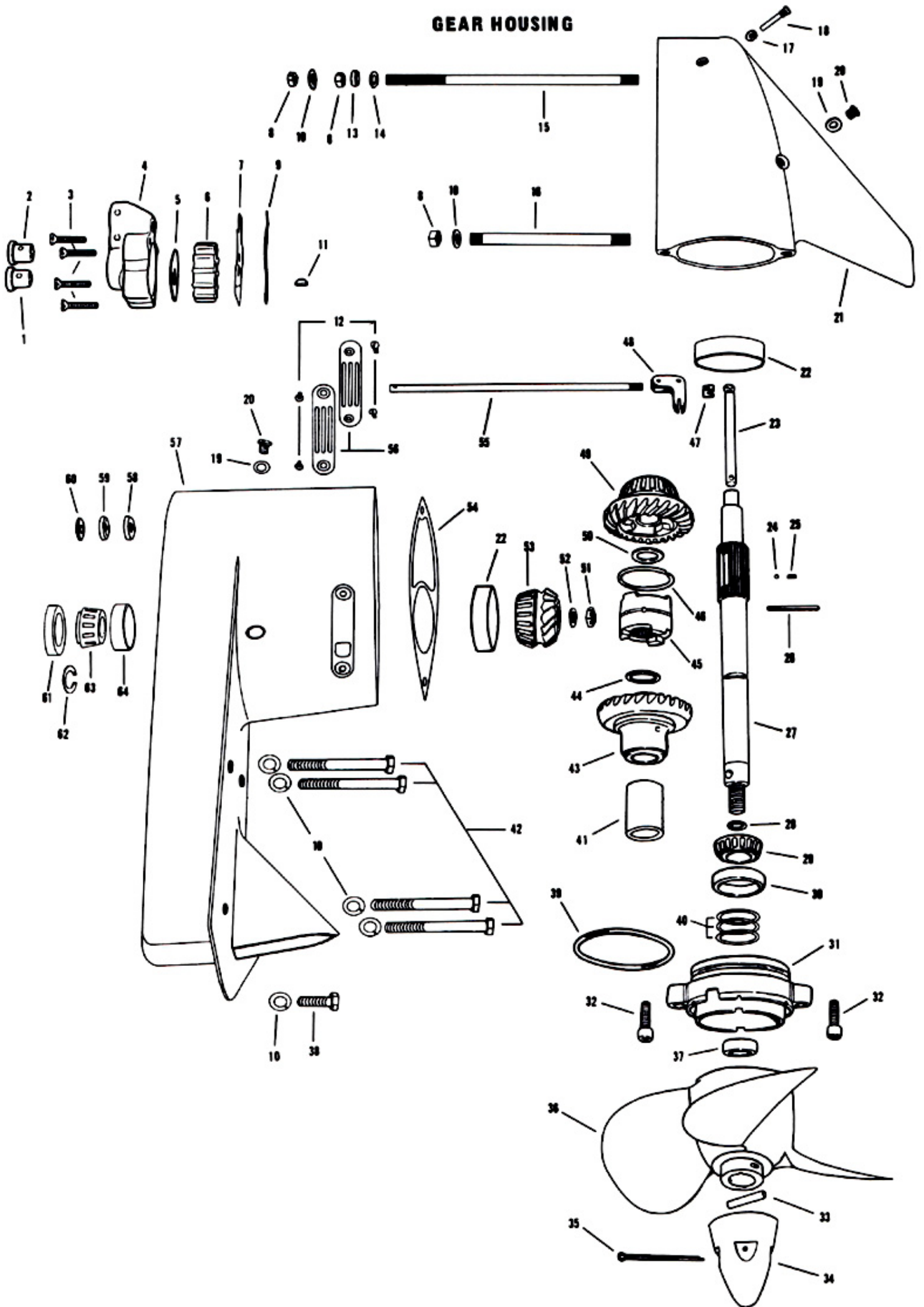
Part No.	Size	Description
*9026	.062"	Bevel gear thrust-front spacer
*9027	.065"	Bevel gear thrust-front spacer
*9028	.068"	Bevel gear thrust-front spacer
*9029	.071"	Bevel gear thrust-front spacer
*9030	.074"	Bevel gear thrust-front spacer
*9031	.077"	Bevel gear thrust-front spacer
*9042	.059"	Bevel gear thrust-front spacer

ILLUS. NO.	PART NO.	QTY.	DESCRIPTION
38	1612	1	Hex hd screw, S.S., 3/8 - 16 x 1 - 1/4
39	84305	1	Seal, propeller shaft bearing cage
40			Shim, propeller shaft bearing cage - see note below
41	384143	1	Bevel gear bearing rear
42	1193	4	Hex hd cap screw, S.S., 3/8 - 16 x 3 - 5/8
43	* 84662	1	Bevel gear - rear
44	* 84717	1	Thrust washer, bevel gear-rear
45	* 84521-1	1	Clutch
46	* 84733	1	Retaining ring, clutch pin
47		1	Gear shift arm yoke, order A84871 gear shift pin
48	* A84621	1	Coupling, gear shift arm
49	* 2A84023	1	Bevel gear front w/bearing
50			Spacer, bevel gear thrust front, see note below
51	84188-1	1	Nut, bevel pinion retaining
52	136717	1	Washer, bevel pinion retaining
53	* A84266	1	Bevel pinion gear w/bearing
54	84555	1	Gasket, gear housing
55	* 84705	1	Gear shift rod - lower
56	84706	2	Water inlet plate
57	A84554	1	Gear housing upper w/plug and washer
58	901618-2	1	Seal, gear shift rod
59	50670	1	Spacer, gear shift rod seal
60	19272	1	Retainer, gear shift rod seal
61	84307	1	Seal, drive shaft
62	84173	1	Retaining ring
63	A40901	1	Drive shaft bearing cone w/cup
64		1	Drive shaft bearing cup order A40901 drive shaft bearing cone w/cup
	C384054	1	Gear housing lower, complete

NOTE: The following shims are available for the propeller shaft bearing cage:

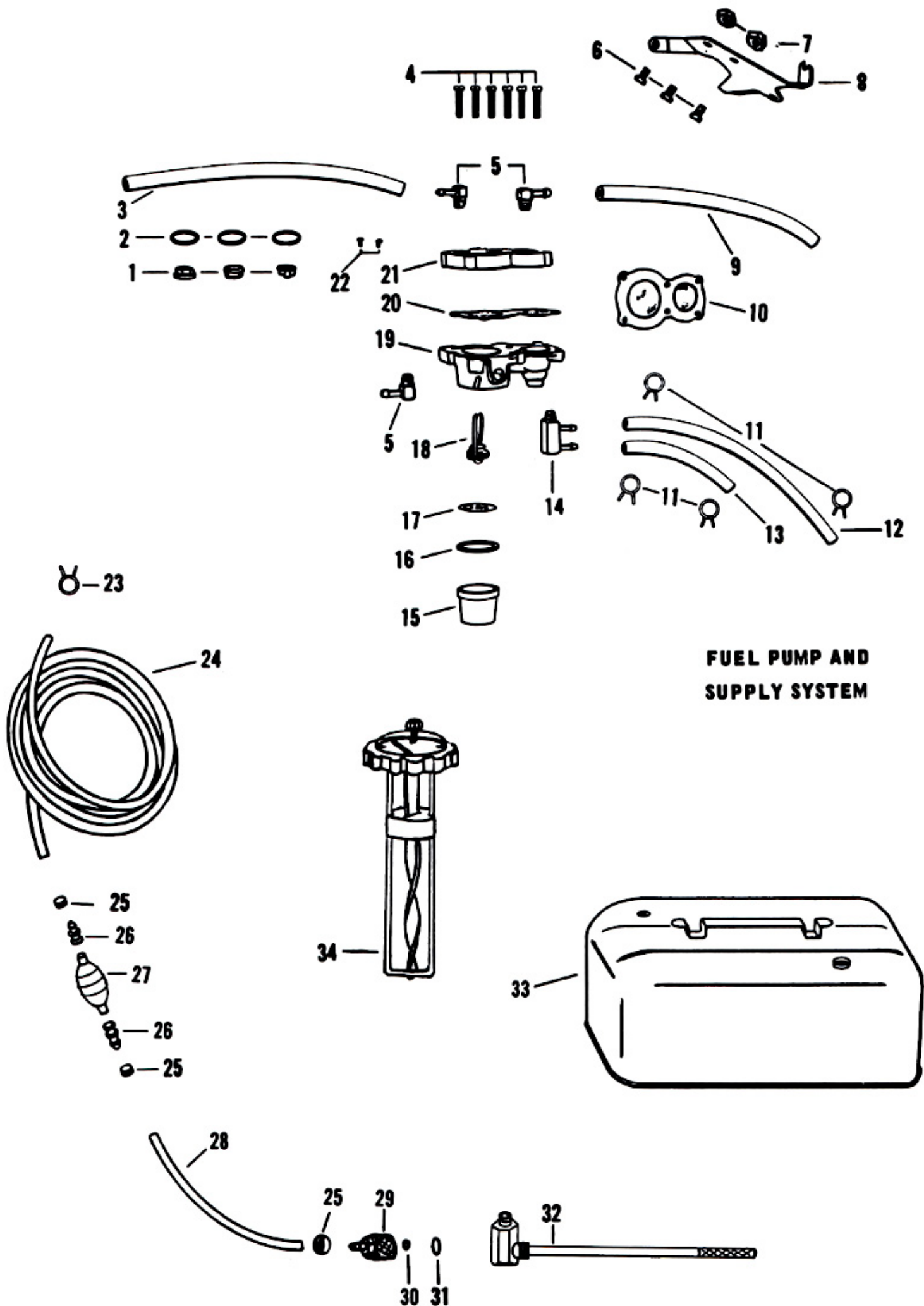
Part No.	Size	Description
*9022	.006"	Shim (Silver)
*9023	.007"	Shim (Brass)
*9024	.010"	Shim (Black)

GEAR HOUSING



Fuel Pump and Supply System

ILLUS. NO.	PART NO.	QTY.	DESCRIPTION
1	177330	3	Fuel pump valve
2	84792	3	Fuel pump valve gasket
3	A84758	1	Fuel pump air hose-top
4	1050	6	Fill hd screw, 10 - 24 x 1
5	84314	3	Elbow
6	1236	3	Hex slot hd screw, 1/4 - 20 x 1/2
7	1514	2	Hex jam nut, 1/4 - 20
8	84432	1	Fuel pump mounting bracket
9	A84753	1	Fuel pump air hose-bottom
10	A84747	1	Fuel pump diaphragm w/gaskets
11	2706772	4	Fuel line clamp
12	A84253	1	Fuel line w/clamps, top carburetor
13	28254	1	Fuel line, bottom carburetor
14	84922	1	Fuel line fitting
15	84500	1	Fuel sediment bowl
16	84617	1	Fuel sediment bowl gasket
17	84653	1	Fuel sediment bowl screen
18	A84650	1	Fuel sediment bail and nut
19	A177431-2	1	Fuel pump body w/valves
20	84760	1	Fuel pump gasket
21	84746	1	Fuel pump cover
22	1299	2	Rd hd screw, 6 - 32 x 1/4
23	97772	1	Fuel line clamp
24	A197752-1	1	Fuel line long w/clamp
25	298788	3	Ferrule
26	298769	2	Prime bulb adapter
27	298766	1	Prime bulb
28	A84754-1	1	Fuel line w/clamps
29	197787-2	1	Fuel line coupler
30	213735	1	Seal fuel line coupler (small)
31	213342	1	Seal, fuel line coupler (large)
32	307755	1	Fuel tank adapter
33	A77034-1	1	6 U.S. gallon fuel tank
34	213251	1	Fuel tank gauge cap
	A289752	1	Fuel supply line complete w/coupler (not shown)
	224394-1	1	Decal, fuel mixture (not shown)



FUEL PUMP AND SUPPLY SYSTEM

Specifications

HORSEPOWER -- 80 O.B.C. Certified Brake H.P. at 4750 R.P.M.

MOTOR -- Two-Cycle, Four-Cylinder in line, (firing order 1-3-2-4).

BORE AND STROKE -- 3-1/8" Bore x 2-3/4" Stroke.

DISPLACEMENT -- 84.36 Cubic Inches.

CONNECTING RODS -- Nickel Steel. Caged Roller Bearings at Crankshaft. Caged Needle Bearings at Piston Pin.

CRANKSHAFT -- Nickel Steel, Caged Roller Bearings at Upper, Center and Lower Mains.

CORROSION PROTECTION -- Lyfanite Treated Castings, Stainless Steel Drive Shaft, Propeller Shaft, Gear Shift Rod and Underwater Fasteners.

TILT LOCK -- Positive Tilt Lock Permits Engine to Remain in Tilted Position When Not in Use.

STARTER -- Electric.

FUEL TANK -- Separate Steel Tank, 6 U.S. Gallons (5 Imperial Gallons).

FUEL SYSTEM -- Vacuum-Type Fuel Pump. Two Float-Feed Carburetors with Fixed High Speed Jets and Adjustable Low-Speed Jets.

FUEL FILTERS -- Filter Screens in Fuel Tank and Fuel Pump.

COOLING -- Water Cooled, Thermostatically Controlled Recirculating Positive Displacement Type Water Pump.

TRANSOM HEIGHT -- 15" or 20" Depending on Model.

NET WEIGHT -- 230 lbs to 235 lbs.

GENERATING SYSTEM -- Constant Current, Three-Phase Alternator Type Generator With Self-Limiting Output of 20 Amps.

RECOMMENDED OPERATING RANGE -- 4400-5100 R.P.M.

PROPELLER SHAFT AND DRIVE SHAFT -- Stainless Steel Hardened, Ground and Polished.

LUBRICATION CHART

UPPER AND LOWER GEAR HOUSINGS -- Check After Every Thirty Hours of Operation and Replace After Every 100 Hours with A non-corrosive Leaded Outboard Gear Oil - EP90, such as Ward's Sea King Hypoid Outboard Gear Oil #60-9118 or equivalent. DO NOT USE A CORROSIVE HYPOID OIL UNDER ANY CIRCUMSTANCES.

CONTROL LINKAGE -- Lubricate All Moving Parts and Control Linkage With Riverside Two-Cycle Engine Oil or S.A.E. 30 Oil Twice Each Season or Oftener If Required.

STERN BRACKET -- Lubricate Stern Bracket and Associated Parts With Riverside Two-Cycle Engine Oil or S.A.E. 30 Oil Twice Each Season or Oftener if Required.

GREASE FITTINGS -- Grease Fittings Are Provided at Critical Points Where Bearing Surfaces Are Not Exposed Externally. Using an Automotive-Type Grease Gun and Lubricant, Grease Twice Each Season or Oftener if Required.

STARTER PINION GEAR -- Lubricate with Rykon #2EP, Part No. K-65, Twice Each Season or Oftener if Required

SPECIAL ADJUSTMENTS

BREAKER POINT GAP -- .020.

SPARK PLUG -- Champion J4J, Gap .030.

FLYWHEEL NUT -- Torque to 70 Foot Pounds.

CYLINDER HEAD BOLT -- Torque to 270 Inch Pounds.